

## INCIDENT REPORT

DATE: 2-27-08

TIME (24 HR): 1030

COLLECTOR: BS & AA

STORET: Yes  No

LOCATION: TME Asphalt Ridge Mine

**TYPE OF POLLUTANT:**

Industrial  Agricultural  Nonpoint  Storm Run Off  Surface Run Off

**DESCRIPTION OF POLLUTANT:**

Oil Slick  Consistency Odor  Color  Intermittent Flow  Continuous Flow

SAMPLE: Yes  No

**FIELD ANALYSIS:**

Temp 0.33C pH 3.88 D.O. 9.39 Sp. Cond. 1791 Flow NA

LAB TEST ANALYSIS: Yes  No

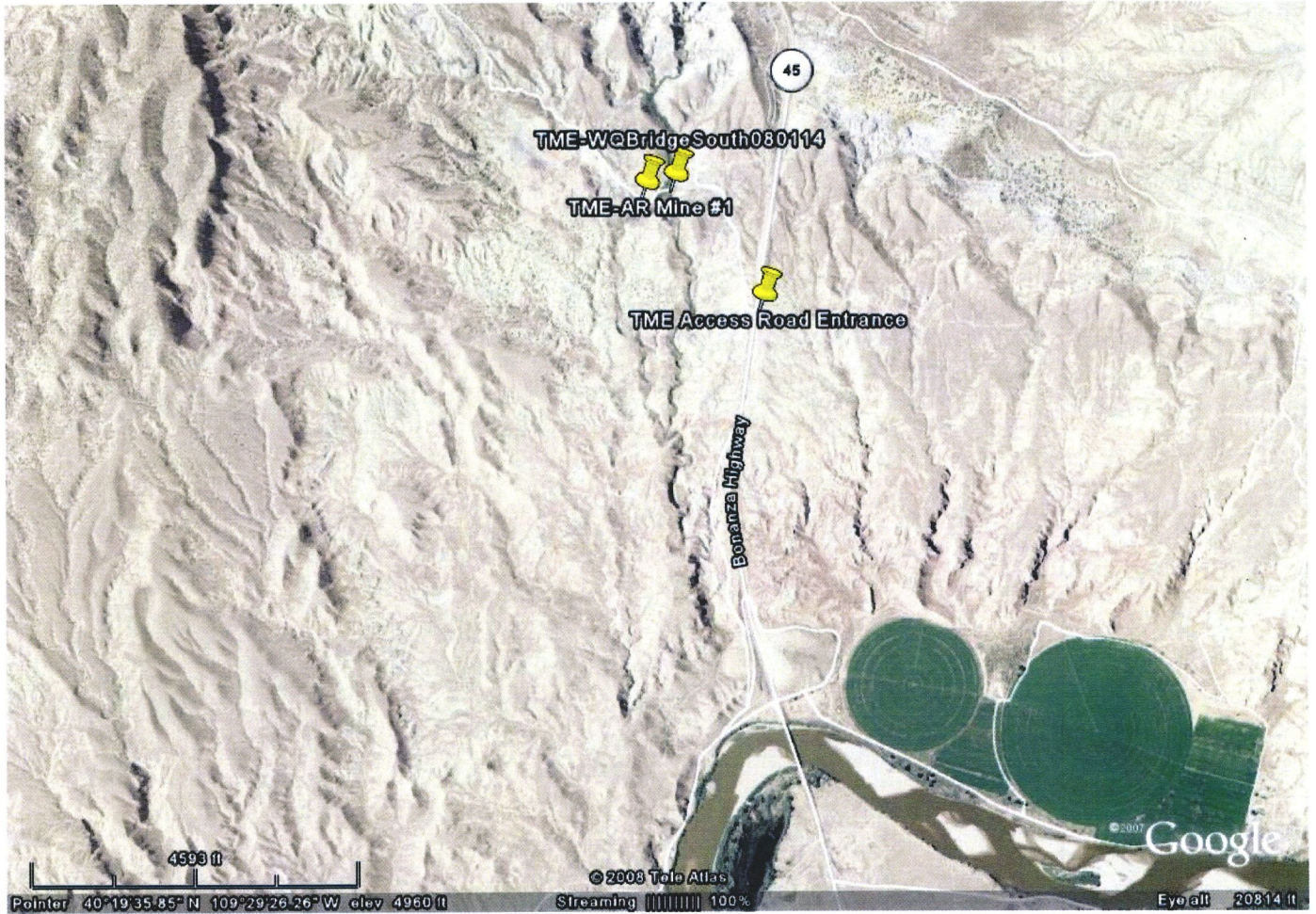
TYPE TEST: Chemistry  BOD  Total Metal  Nutrient  BacT.  Oil/Grease   
Other

**FIELD COMMENTS:** TME Asphalt Ridge Mine was interested in tar sand development outside of Vernal. Their preliminary samples taken upstream of the facility resulted in pH = 3. Novak requested that the Monitoring Section verify these field readings. Three samples were taken. The first (results above) and second samples (T = 0.25C, pH = 3.33, SpC = 1789, DO = 9.57) were taken at the same site as the original. The third sample (T = 0.18C, pH = 3.13, SpC = 59, DO = 9.73) was taken above the bridge. The perennial stream is fed by a spring 0.25 - 0.5mi upstream, however we could not get to it due to snowy conditions. See corresponding pdfs for more site information.



DWQ-2016-009161

*JS*



Annotation	station_id	aDate	atime	temp	pH	sp_cond	Salinity	percentDO	DisOxy
Annotation at 022708 102715 :	TME SPECIAL SAMPLE	22708	103005	0.33	3.88	1791	0.95	74.7	9.39
Annotation at 022708 104105 :	2ND TME	22708	104147	0.25	3.33	1789	0.95	76	9.57
Annotation at 022708 104105 :	3rd AB Bridge	22708	104551	0.18	3.13	59	0.05	77.1	9.73

depth	sechi	Turbidity
@	1.4	7.4
@	1.4	7.3
@	1.4	7.3